



# AccuLock ALS200

---

## Table of Contents

3 **KMS Deadbolt**

4 How to Order

5 **GTS Cylindrical Lock**

6 How to Order

7 **MRS Mortise Lock**

8 How to Order

9 **6EWS Mortise Lock**

10 How to Order

11 **Spirit Reader Series**

12 **Access Control Panel**

13 **Power Supply**

### BLUETOOTH ACCESS CONTROL



PHONE



RFID



KEY

### Features

- Built from PDQ's KM Series Heavy Duty Deadbolt
- Designed for quick installation
- Backset: 2-3/8" - 2-3/4" (Adjustable)
- Door Thickness: 1-3/8" - 1-3/4"
- RFID, Smartphone, Mechanical Key
- 13.56MHz Classic, EV1, EV2, EV3, NFC
- Conventional, SFIC, High Security and UL437
- Standalone, Online
- BLE 4.2
- AES 256
- -20C to 65C Operating Temperature
- 0-95% Humidity (Non - condensing)
- FCC Part 15, UL/ cUL 10C 20-Minutes
- Assembled in USA



EXTERIOR VIEW



INTERIOR VIEW

### Architectural Finishes



613 (US10B)  
Oil Rubbed Bronze



622 (US19)  
Flat Black



626 (US26D)  
Satin Chromium



606 (US4)  
Satin Brass

### Cylinders



### How to Order

QTY	SERIES	FAMILY	CREDENTIAL	FUNCTION	FINISH	BACKSET	CYLINDER	KEYWAY	KEYING
	KMS	AL	N	116	626	ADJ	D	SCC	KD
			N - NFC		613 622 606	ADJ - Adjustable 2-3/4" - 2-3/8"	See Cylinders	See Keyways	<b>KD</b> - Keyed Different <b>KO</b> - Zero Bitted <b>KA</b> - Keyed Alike <b>KE</b> - Keyed to Existing <b>MK</b> - Master Key <b>CMK</b> - Construction Master Key

## BLUETOOTH ACCESS CONTROL



PHONE



RFID



KEY

### Features

- Built from PDQ's World-Class GT Series Grade 1 Cylindrical Lock
- Designed for quick installation
- Backset: 2-3/4" (standard), 5" (optional)
- Door Thickness: 1-3/4" - 2-1/4"
- RFID, Smartphone, API, Mechanical Key
- 13.56MHz Classic, EV1, EV2, EV3, NFC
- Conventional, SFIC, High Security and UL437
- BLE 4.2, 5.2, ZigBee 3.0, Thread, WiFi (802.11 b/g/n)
- AES 256
- 4xAA batteries up to 2 years or 5V DC
- -20C to 65C Operating Temperature
- 0-95% Humidity (Non - Condensing)
- FCC Part 15, UL/ cUL 10C 45-Minutes
- Assembled in USA



EXTERIOR VIEW

### Lever Designs



PHILADELPHIA – PHL



BOSTON – BSN



MIAMI – MIA

### Architectural Finishes



613 (US10B)  
Oil Rubbed Bronze



622 (US19)  
Flat Black



626 (US26D)  
Satin Chromium



606 (US4)  
Satin Brass




### Cylinders



## How to Order

QTY	SERIES	FAMILY	CREDENTIAL	FUNCTION	LEVER	FINISH	HANDING	BACKSET	STRIKE	CYLINDER	KEYWAY	KEYING	
	GTS	AL	N	116	PHL	626	RH*	234	ASA	D	SCC	KD	
*Handed but field reversible.			N - NFC		BSN	606 613 622	LH	2-3/4" (standard)	ASA - ANSI/ASA (standard)	See Cylinders		KD - Keyed Different	
					MIA			5 - 5"	FL - Full Lip				KO - Zero Bitted
									T - "T" Strike				KA - Keyed Alike
											See Keyways		KE - Keyed to Existing
													MK - Master Key
													CMK - Construction Master Key

## Strikes

	CODE	DESCRIPTION
	ASA	ASA Strike 1-1/4" x 4-7/8"
	T	T-Strike 1-1/8" x 2-3/4"
	FL	Full Lip Strike 1-5/8" x 2-1/4"

# MRS-AL

## Mortise Lock Sectional Trim

Wireless Locking Solution

### BLUETOOTH ACCESS CONTROL



PHONE



RFID



KEY

### Features

- Built from PDQ's World-Class MR Series Grade 1 Mortise Lock
- Designed for quick installation. Fits standard ANSI/BHMA A156.115 Door Prep
- Door Thickness: 1-3/4" (standard), 2" and 2-1/4" (optional)
- RFID, Smartphone, API, Mechanical Key
- 13.56MHz Classic, EV1, EV2, EV3, NFC
- Key Override, Latchbolt Monitor, Do not Disturb, Request to Exit, Battery Status
- Conventional, SFIC, LFIC, High Security and UL437
- BLE 4.2, 5.2, ZigBee 3.0, Thread, WiFi (802.11 b/g/n)
- AES 256
- 4xAA batteries up to 2 years or 5V DC
- -20C to 65C Operating Temperature
- 0-95% Humidity (Non - condensing)
- FCC Part 15, UL/ cUL 10C 3-hour
- Assembled in USA

### Lever Designs



PHILADELPHIA – PHL



BOSTON – BSN



MIAMI – MIA

### Architectural Finishes



613 (US10B)  
Oil Rubbed Bronze



622 (US19)  
Flat Black



630 (US32D)  
Satin Stainless Steel



606 (US4)  
Satin Brass



### Cylinders



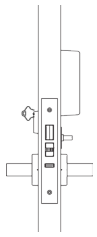
### Rose Designs



ROUND ROSE  
F-TRIM



SQUARE ROSE (SR)  
J-TRIM

FUNCTION NUMBER	OUTSIDE   INSIDE	DESCRIPTION
136		<ul style="list-style-type: none"> <li>• Latchbolt operated by lever from either side</li> <li>• Key outside extends/retracts deadbolt</li> <li>• Thumbturn inside extends/retracts deadbolt</li> <li>• Inside lever simultaneously retracts latchbolt and deadbolt</li> <li>• Outside lever is momentarily unlocked by a valid credential</li> <li>• Outside lever is relocked after predetermined time as managed by the administrator</li> <li>• Inside lever always retracts the latchbolt and allows unimpeded egress.</li> </ul>

## How to Order

QTY	SERIES	FAMILY	CREDENTIAL	FUNCTION	LEVER	TRIM	FINISH	HANDING	BACKSET	STRIKE	CYLINDER	KEYWAY	KEYING
	MRS	AL	N	136	PJ	SJ	630	RH**	234	ASA	See Cylinders	See Keyways	KD
			N - NFC		J-TRIM	J-TRIM	606 613 622	RHR  LH LHR	234 - 2-3/4"				KD - Keyed Different KO - Zero Bitted KA - Keyed Alike KE - Keyed to Existing MK - Master Key CMK - Construction Master Key
					PJ - PHL BJ - BSN MJ - MIA	SJ - Sectional Round Rose  SR - Sectional Square Rose		*MEM specify handing. **Handed but field reversible. Memphis handed only.					



## BLUETOOTH ACCESS CONTROL



PHONE



RFID



KEY

### Features

- Built from PDQ's World-Class 6W Series Exit Device Trim
- For use with PDQ's 6300 Series RIM and Surface Vertical Rod
- 1-3/4"-2-1/4" door thickness
- RFID, Smartphone, API, Mechanical Key
- 13.56MHz Classic, EV1, EV2, EV3, NFC
- Conventional, SFIC, LFIC, High Security and UL437
- BLE 4.2, 5.2, ZigBee 3.0, Thread, WiFi (802.11 b/g/n)
- AES 256
- 4xAA batteries up to 2 years or 5V DC
- -20C to 65C Operating temperature
- 0-95% Humidity (Non - condensing)
- FCC Part 15
- Assembled in USA



### Cylinders



### Lever Designs



PHILADELPHIA – PHL



BOSTON – BSN



MIAMI - MIA

### Architectural Finishes



613 (US10B)  
Oil Rubbed Bronze



622 (US19)  
Flat Black



626 (US26D)  
Satin Chromium

## How to Order

QTY	SERIES	FAMILY	CREDENTIAL	LEVER	TYPE	FINISH	HANDING	CYLINDER	KEYWAY	KEYING	OPTIONS
	6EWS	AL	N	PHL	R	613	RH*	See Cylinders	See Keyways	KD	
			N - NFC	BSN MIA	R - Rim  V - Surface Vertical Rod	622 626	LH			KD - Keyed Different KO - Zero Bitted KA - Keyed Alike KE - Keyed to Existing MK - Master Key CMK - Construction Master Key	VD1 VD2 PR1 YC1 DK1

\*Handed but field reversible.  
 \*PDQ Finish designations do not  
 indicate base material.

### Bluetooth Access Control



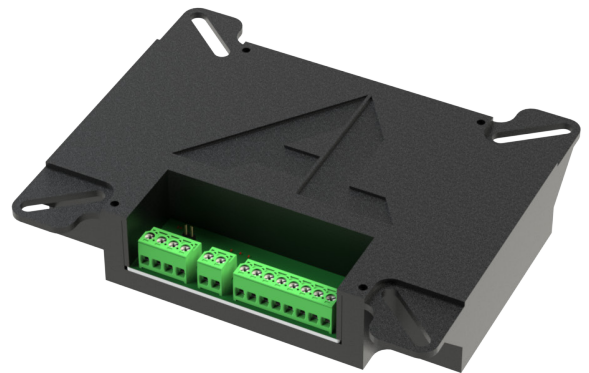
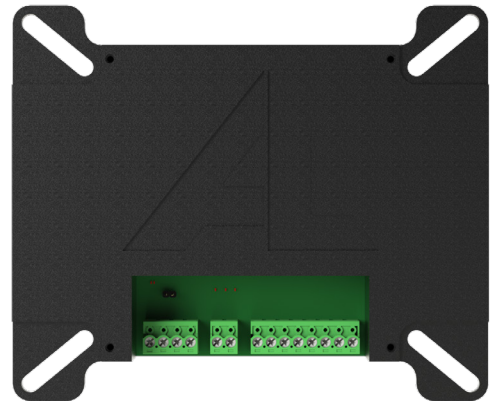
### Features

- Multiple Technologies in One : Prox, MIFARE, NFC, BLE 5.2
- OSDP Secure Channel and remote firmware upgrades
- MIFARE® DESFire® Classic, EV1, EV2, EV3
- LEAF Credential support
- 5-15 V DC Voltage
- Current: 105mA Average, 145mA Peak
- -45 to 60C temperature
- 95% non-condensing humidity
- Read range of 2-4"
- 256-bit security
- Wiegand: 200 feet = 22 AWG
- OSDP: 1000 feet = 22 AWG
- Assembled in USA
- 2 year warranty



### Features

- Voltage 12-24 V DC
- Relay Max Current 5A
- Temperature -45 to 60C
- Humidity 95% non-condensing
- Security AES 256 bit
- Warranty 2 years
- Assembled in USA



### Features

- Filtered/Regulated 24 Volts DC
  - Overload, Over Voltage and Short Circuit Protection
  - Accepts 110-120VAC
  - Controls Fail Safe or Fail Secure Locking Devices
  - Interface Relay Isolates Locking Device Current from Control Switch
  - Auxiliary 24VDC Constant Voltage Output for Powering Stand Alone Devices, Such as, Keypads, Motion Detectors and Status Indicators
  - Surge Suppression on Fail Safe and Fail Secure Outputs
  - UL Listed and Tested to 294 Standard for Access Control System Units
- Units
- 3 year warranty
  - Made in the USA



**AccuLock, Inc.**

**Phone:** 817.866.3918

**Website:** <https://acculock.com>

**Email:** [als1sales@acculock.com](mailto:als1sales@acculock.com)